

MP Products Marble Finish Coats: are formulated acrylic stucco finish coats for E.I.F.S and Direct Applied Systems. They provide superior application and performance characteristics at a lower cost than most conventional synthetic finishes. MP Marble Finish Coats allow easy workability due to smooth troweling allowing the applicator to cover more square feet per pail. MP Marble Finish Coats are available in 5 textures and 140 of the industries most popular colors and custom color matching can be achieved with state of the art equipment.

MP Products Top Coats: are formulated acrylic coatings designed for recoating existing acrylic-based textured finishes or for finishing concrete, masonry, or cement walls with a smooth or textured roll on finish. It's use is to revitalize, refresh or restore, as well as to change the color of existing acrylic-based textured finishes. MP Products Top Coats are available in two textures, Polystone (sand) and Top Coat Flat (no sand). They are both roller, brush, or spray applied and are available in 140 colors made to order. MP Top Coats fill pinholes and imperfections in the surface to be coated. MP Products Marble Finish Coats can be applied directly to MP Top Coats and this will ensure double the Waterproof Protection.

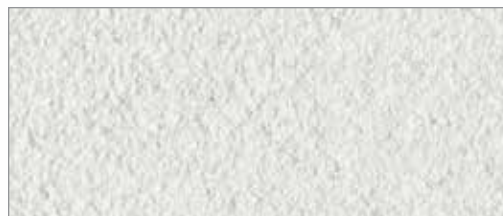
MP Products Elastic - Sealant: is a polymer modified waterproofing membrane and air barrier that provides extra protection from wind-driven rain while minimizing condensation within the wall system. MP Products Elastic - Sealant Weather Barrier is a water-resistant membrane that denies air infiltration. MP Products Elastic-Sealant is applied by brush, short nap roller or spray to vertical above-grade wall sheathing. It can be used for above-grade and low-grade concrete masonry surfaces. MP Products Marble Finish Coats can be applied directly to MP Elastic-Sealant once cured. This will ensure double the Waterproof Protection.

MP Products Primer Paint: is a water-based acrylic primer designed for coating existing Concrete, Masonry, or Cement Stucco prior to application of MP Products Marble Finish Coats. MP Products Primer Paint is roller or brush applied, pigmented and available in 140 standard colors as well as custom paint colors. Primer prepares the surface by coordinating the substrate color with the MP Products Marble Finish Coat to be applied. It fills pinholes and imperfections in the substrate and reduces suction of the finish by cementitious substrates thereby allowing the finish to spread evenly without gaps, contraction or diminution.

MP Products Polystrong Flex Trim Coat: is a formulated Acrylic Coating specifically designed to eliminate the use of Fiberglass Mesh & Basecoat on E.P.S Trims and Shapes, which can be tedious work. MP Polystrong Flex Trim Coat contains shredded Alkali-Resistance Fiberglass which prevents cracking. The advantages of using MP Polystrong Flex Trim Coat are saving time & money on labor and material. Also, the risk of efflorescence is eliminated because this is an acrylic coating and not a cement coating.

MP Primer Adhesive 50/50: is a formulated latex mixture that can be mixed with Portland cement to make a superior E.I.F.S Basecoat and Adhesive for E.P.S Board. One pail of Primer Adhesive 50/50 divided into 2 parts can be mixed with Portland cement to make 2 pails of mixture.

MP Basecoat: is a latex modified cement product. MP Basecoat is designed specifically as a base coat to embed reinforcing mesh over approved substrates as part of an E.I.F.S System. Also used to Adhere E.P.S Board to approved substrates.



MP Super Smooth .22 Finish Coat



MP Marble Fine .10 Finish Coat



MP Intermediate 1.0 Finish Coat



MP Coarse Medium 1.5 Finish Coat



MP Scratch Medium 1.5 Finish Coat



MP Polystone Waterproofing Roll On Finish Coat



MP Polystrong Flex Trim Coat



MP PRODUCTS

Exterior Insulation • Finish Systems
Synthetic Stucco
Manufacturers & Distributors

27 Verona Avenue, Newark NJ 07104

Tel: (201) 392-0040 / (973) 483-8630 • Fax: (973) 483-8635

www.mpproducts.net

mpproduct01@hotmail.com

The Best Quality Products

MP Products Test Data Sheet

Test	Method	Results
Resistant to fungus	MIL-STD 810-B508	Passed
Resistance to wind driven rain	Federal SEPC TTC555B	No moisture penetration
Abrasion resistance	ASTM-D 968	No significant damage or break through
Humidity resistance	STD 141-6201	No softening
Falling ball impact	ASTM C-1037-93 Sect 91	Passed
Freeze thaw 60 cycles	ASTM C-67	Passed: no deleterious effects observed
Flexural strength test	ASTM C203-92 Method A, Procedure 1	Passed: no break
Accelerated weathering	ASTM G 23-93 Type H	Passed: 2000 hrs., no deleterious effects
Water vapor transmission	ASTM E96C	Passed
Salt spray	ASTM B-117	Passed: remain unchanged after 2000 hrs
External fire resistant test	ASTM E-108	Passed
Surface burning	ASTM E-84	Passed: flame spread and smoke generation
Radiant panel ignition test	ASTM E648	Passed





The intent of this color chart is to provide a guide representation of finish colors and is offered as a sales tool to help in the selection of color. Due to the neutral aggregates used in the actual product and varying individual application techniques, the finished appearance may range slightly in color. We recommend that the actual color selection be approved from physical samples of each texture and color prepared by the applicator using the same tools and techniques proposed for the project.